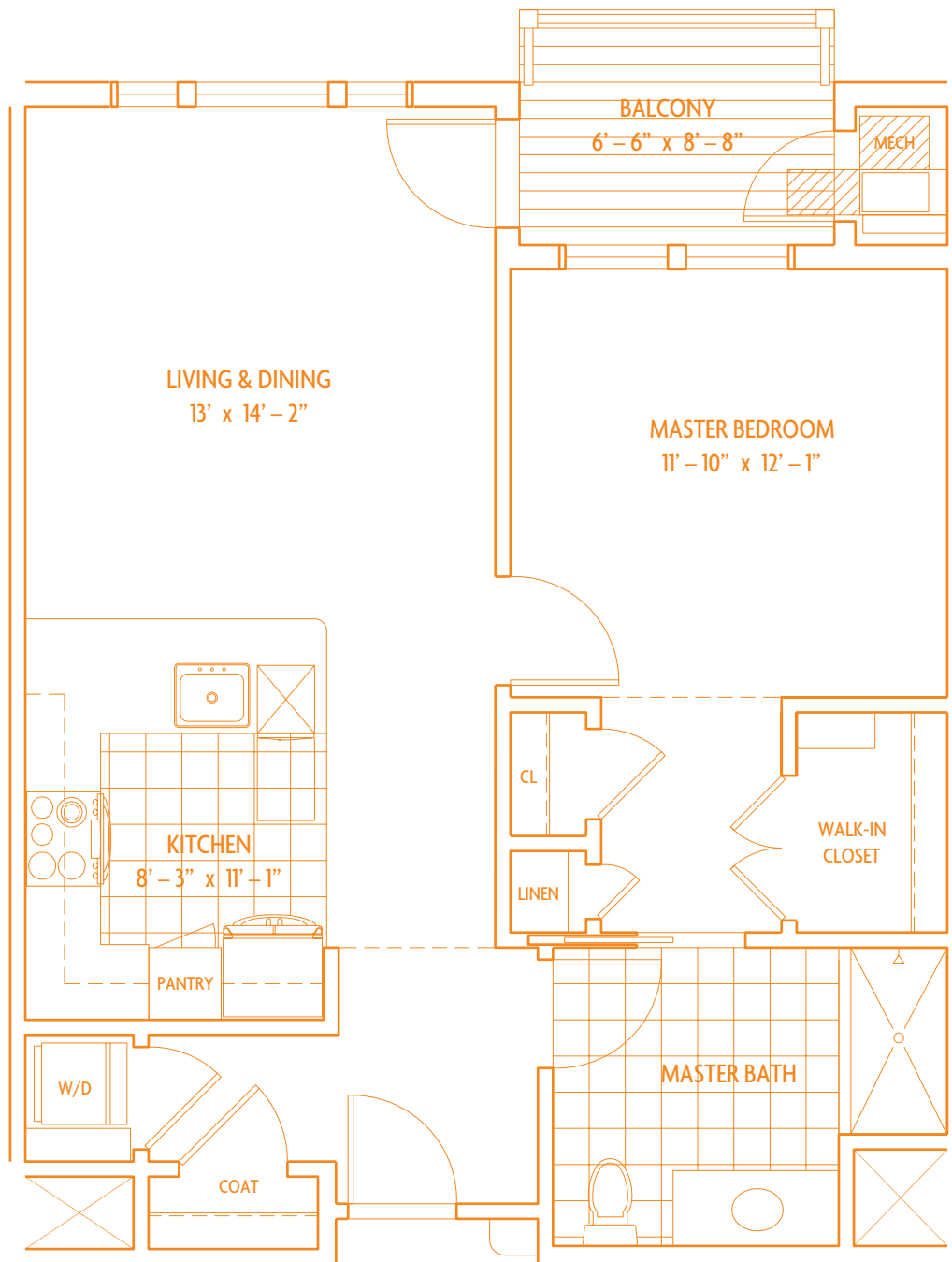


# Shinnecock II

One Bedroom Apartment

800 Square Feet



**W/D** - Stackable Washer/Dryer

**CL** - Closet

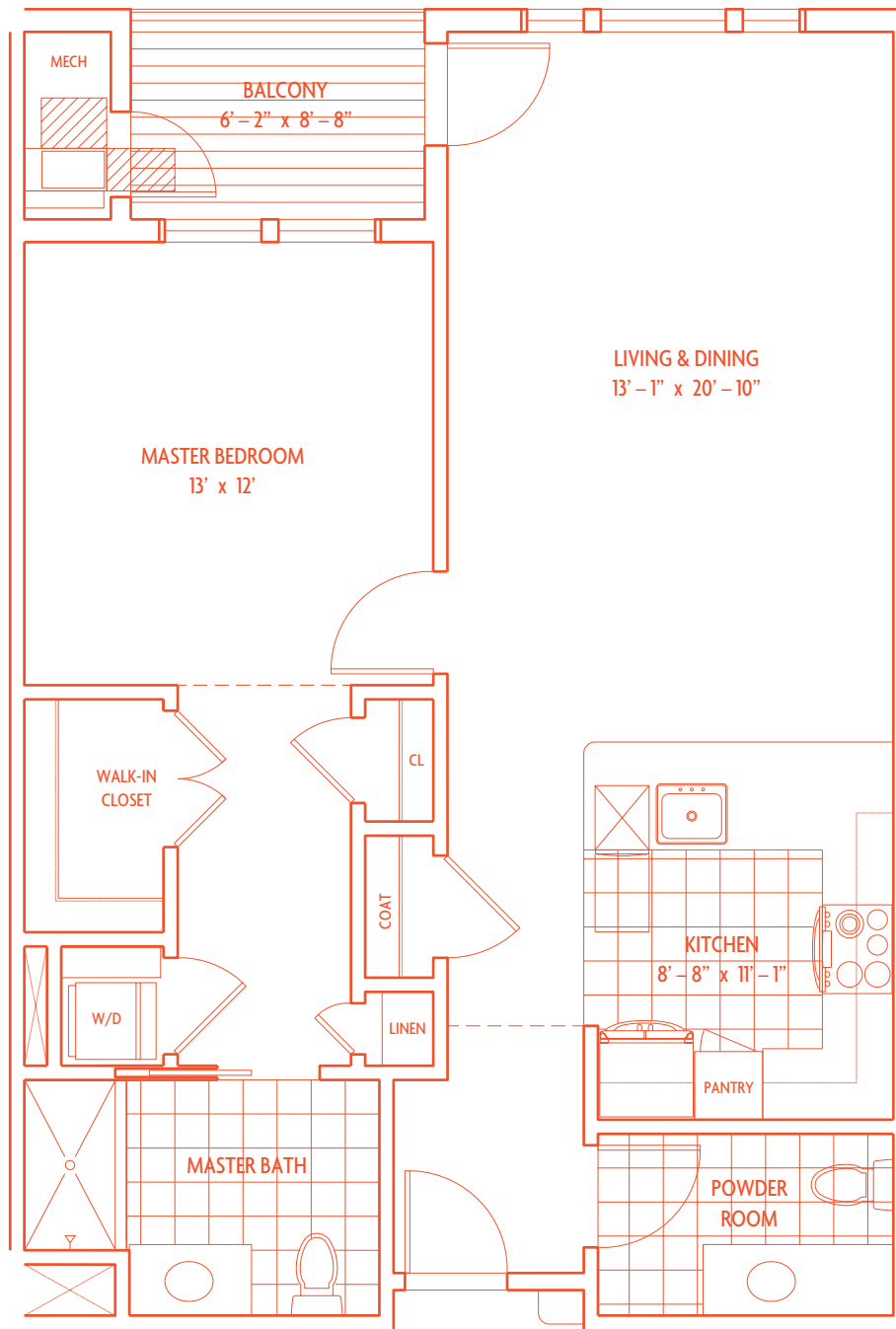
**Mech** - Mechanical Closet

Square-footage calculations exclude covered porches and have been rounded off.

# *Sterling I1*

One Bedroom Apartment

950 Square Feet



**W/D** - Stackable Washer/Dryer

**CL** - Closet

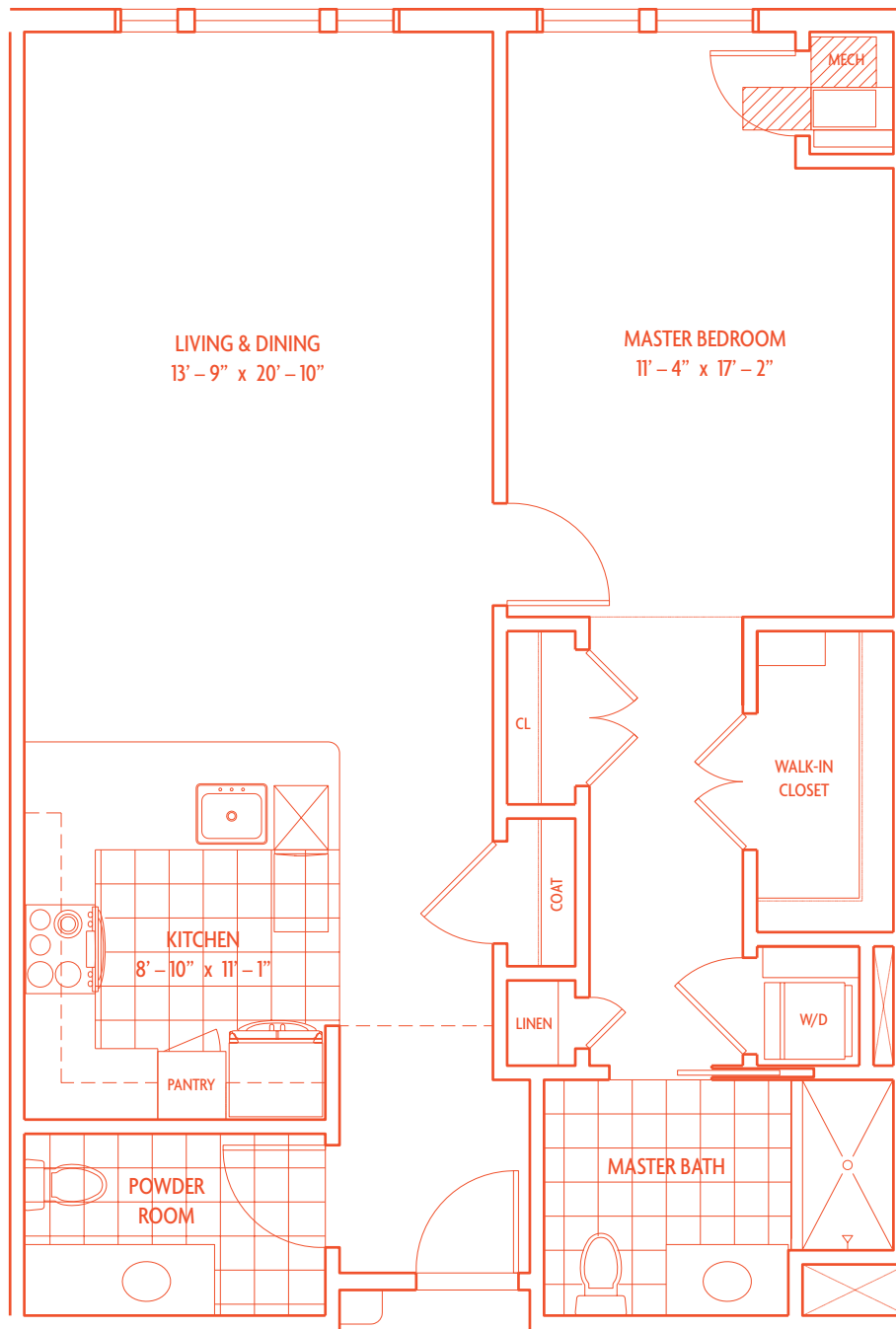
**Mech** - Mechanical Closet

Square-footage calculations exclude covered porches and have been rounded off.

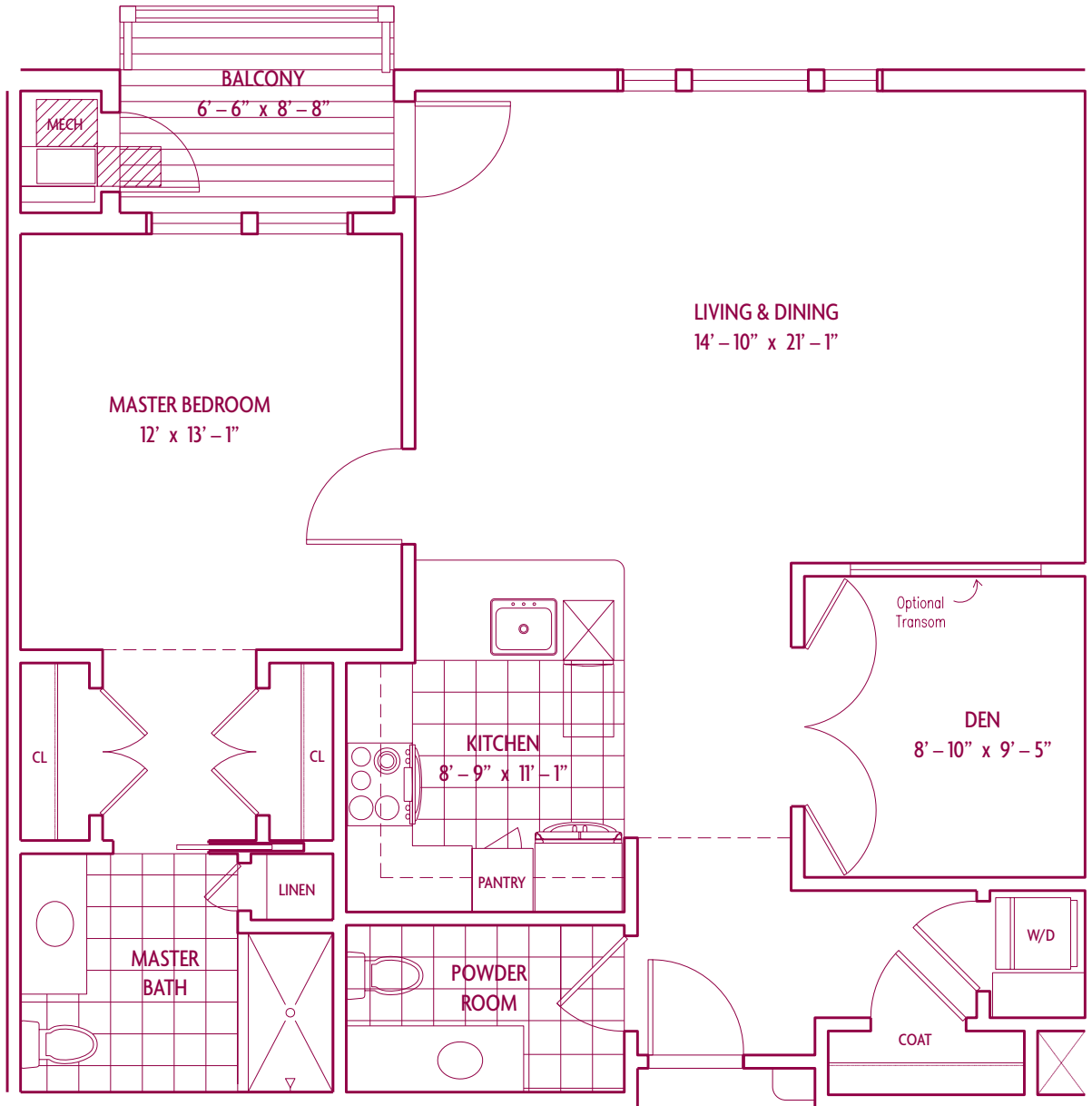
# *Sterling I2*

One Bedroom Apartment

1,000 Square Feet



**W/D** - Stackable Washer/Dryer      **CL** - Closet      **Mech** - Mechanical Closet  
Square-footage calculations exclude covered porches and have been rounded off.

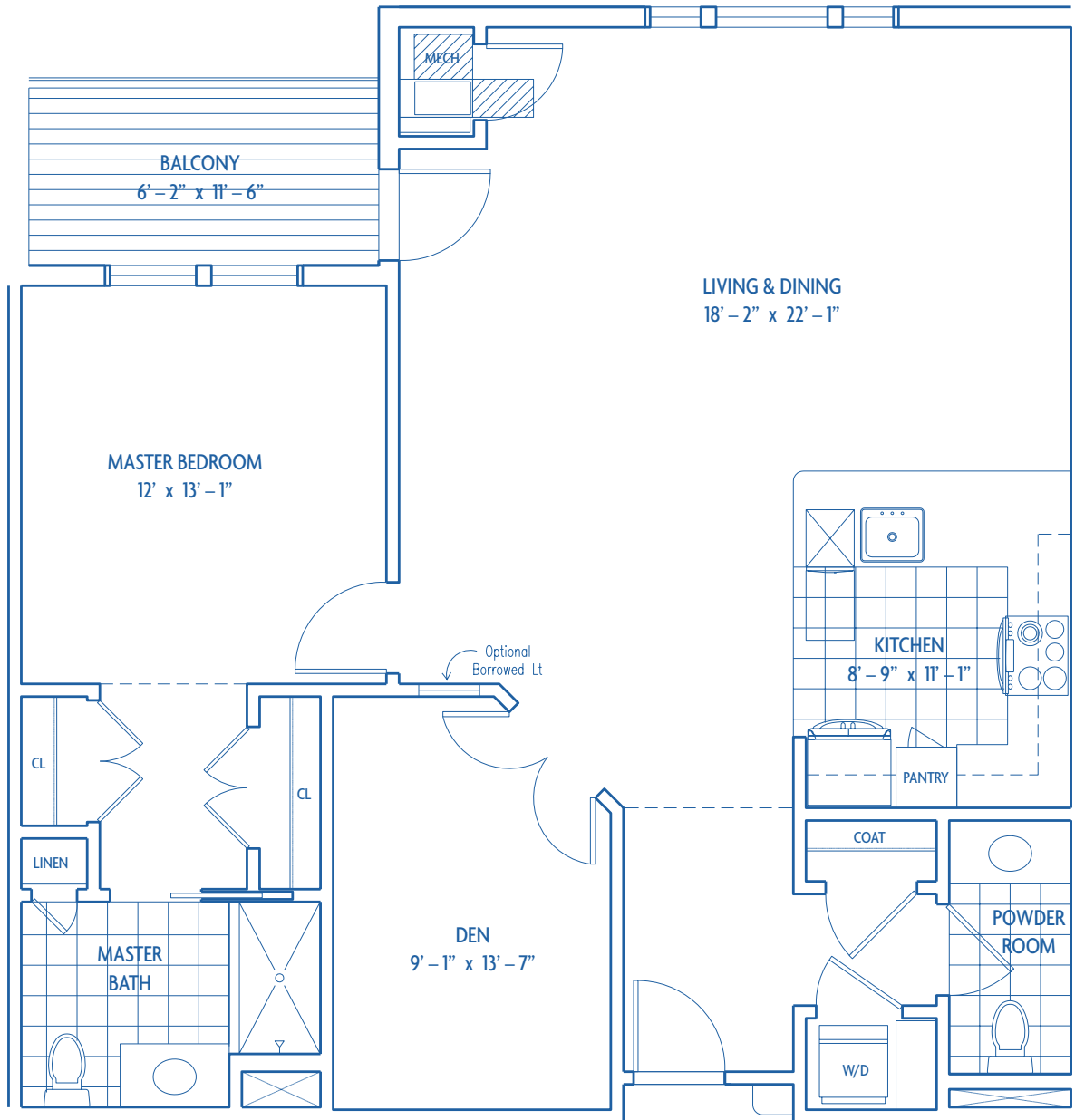


**W/D** - Stackable Washer/Dryer

**CL** - Closet

**Mech** - Mechanical Closet

Square-footage calculations exclude covered porches and have been rounded off.

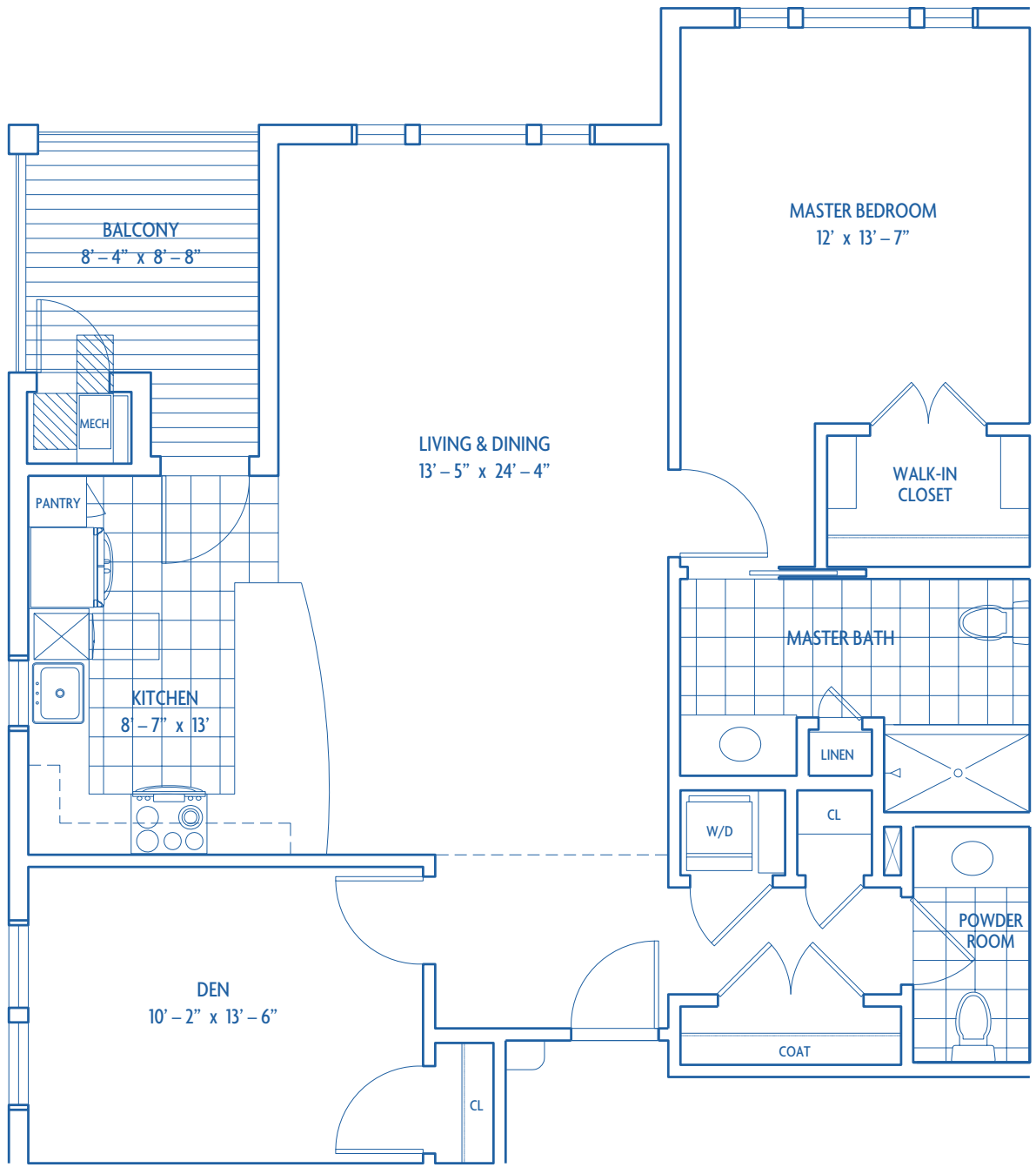


**W/D** - Stackable Washer/Dryer

**CL** - Closet

**Mech** - Mechanical Closet

Square-footage calculations exclude covered porches and have been rounded off.

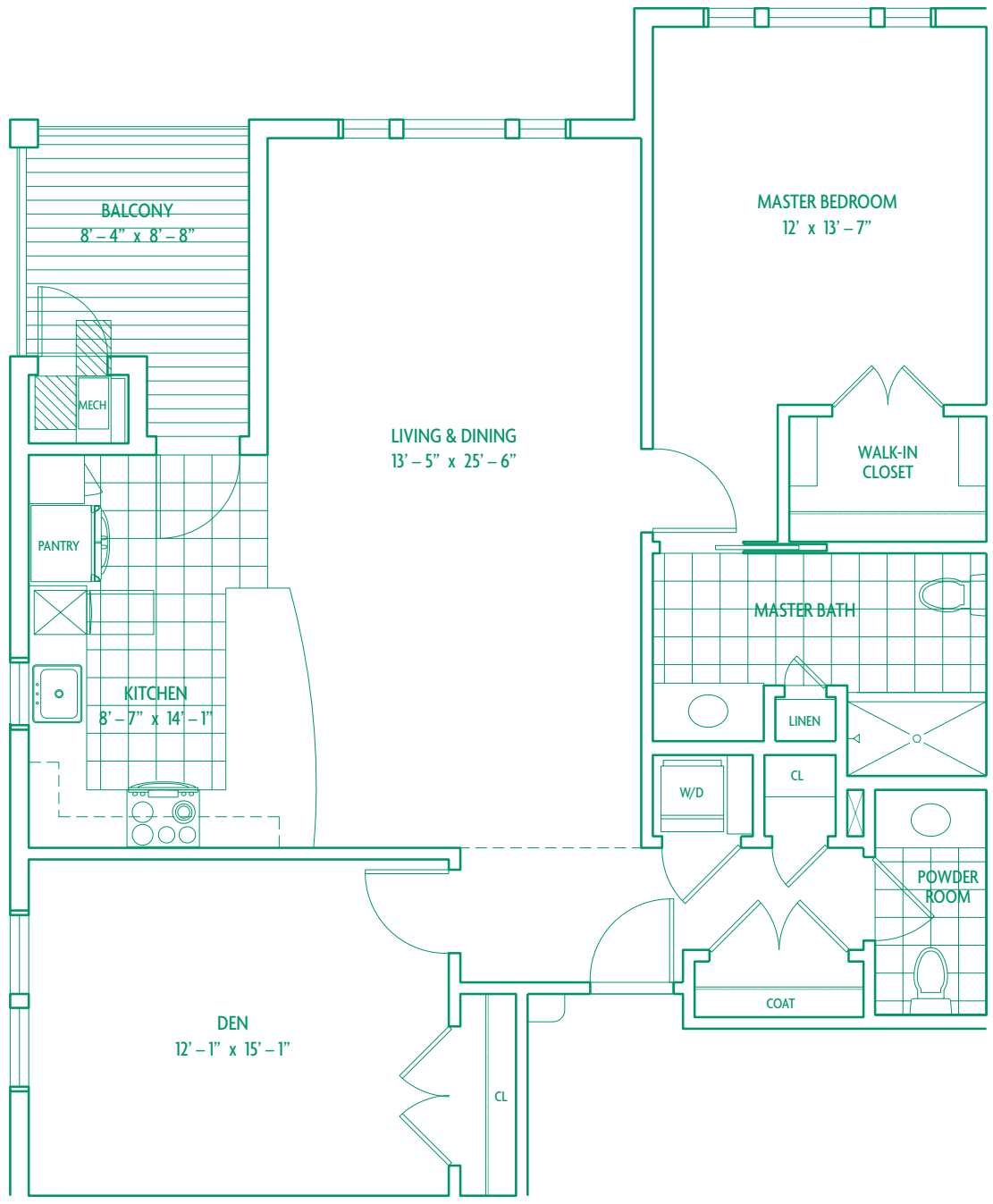


**W/D** - Stackable Washer/Dryer      **CL** - Closet      **Mech** - Mechanical Closet  
Square-footage calculations exclude covered porches and have been rounded off.

# Orient Point L1

## One Bedroom & Den Apartment

1,230 Square Feet



**W/D** - Stackable Washer/Dryer

**CL** - Closet

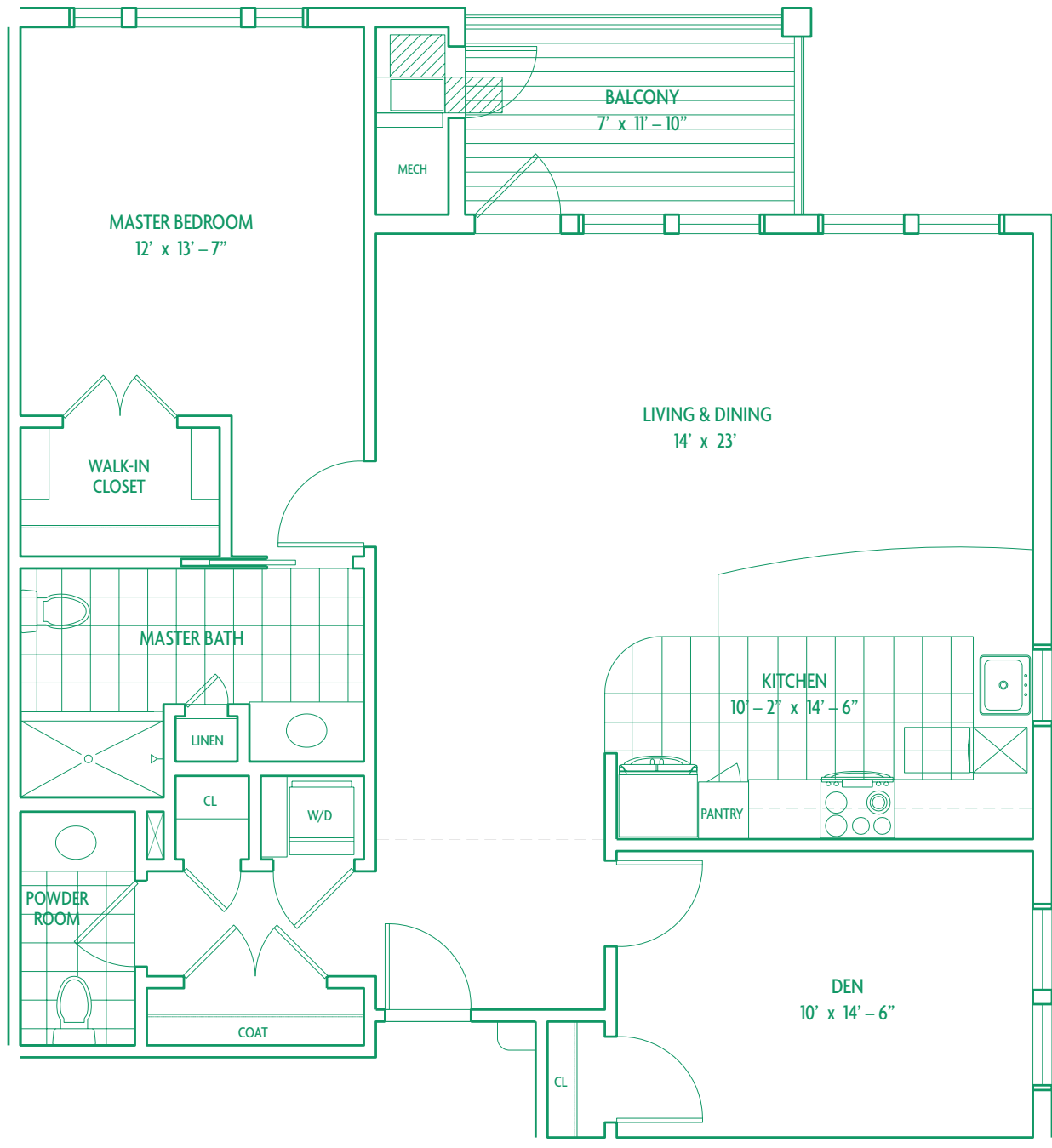
**Mech** - Mechanical Closet

Square-footage calculations exclude covered porches and have been rounded off.

# Orient Point L2

## One Bedroom & Den Apartment

1,230 Square Feet



**W/D** - Stackable Washer/Dryer

**CL** - Closet

**Mech** - Mechanical Closet

Square-footage calculations exclude covered porches and have been rounded off.



# Residential Features & Amenities

---

- Wall-to-wall carpeting.
- Numerous large walk-in closets.
- Fully equipped kitchens with dishwasher, disposal, frost-free refrigerator/freezer, microwave, and electric range.
- Quality wood cabinetry in kitchens and baths.
- State-of-the-art fire/smoke detectors and sprinkler systems.
- Customizing options available at owner's cost.
- Out-of-season storage available for apartment residents.



1500 Brecknock Road  
Greenport, NY 11944  
(631) 477-3800 • Toll Free (888) 273-2664  
[www.peconiclanding.org](http://www.peconiclanding.org)



**Disclaimer:** The purpose of these marketing materials is for Peconic Landing to offer prospective residents the opportunity for a guaranteed priority placement in the Community by entering into a priority reservation agreement and paying a fully refundable priority reservation fee. The priority reservation agreement is not a continuing care contract and may be cancelled at any time by the prospective resident or their legal representative. All priority reservation fees paid shall be held in escrow and shall be refunded with accrued interest paid at prevailing rates to the person paying the fee or the person's legal representative upon cancellation of the priority reservation agreement.